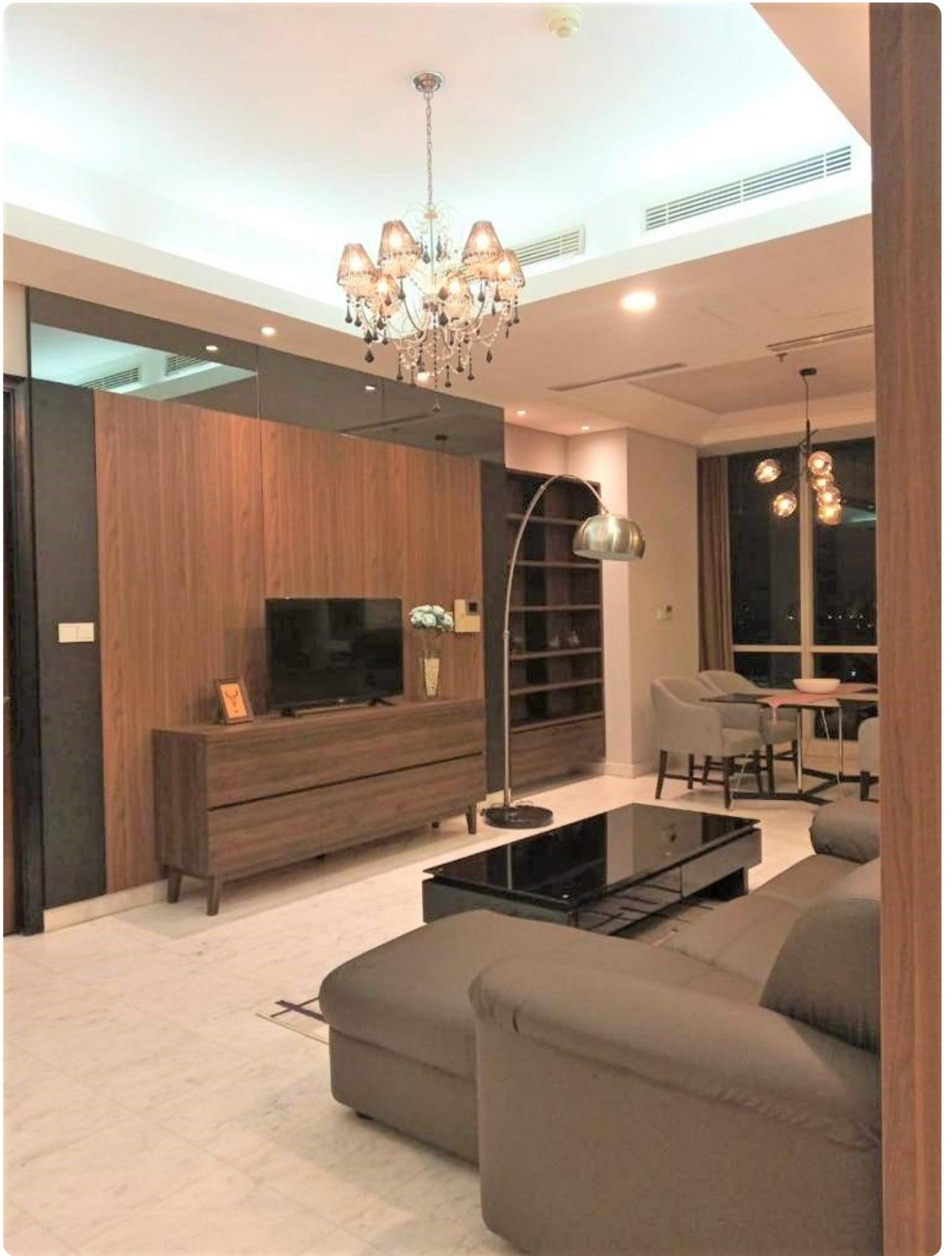
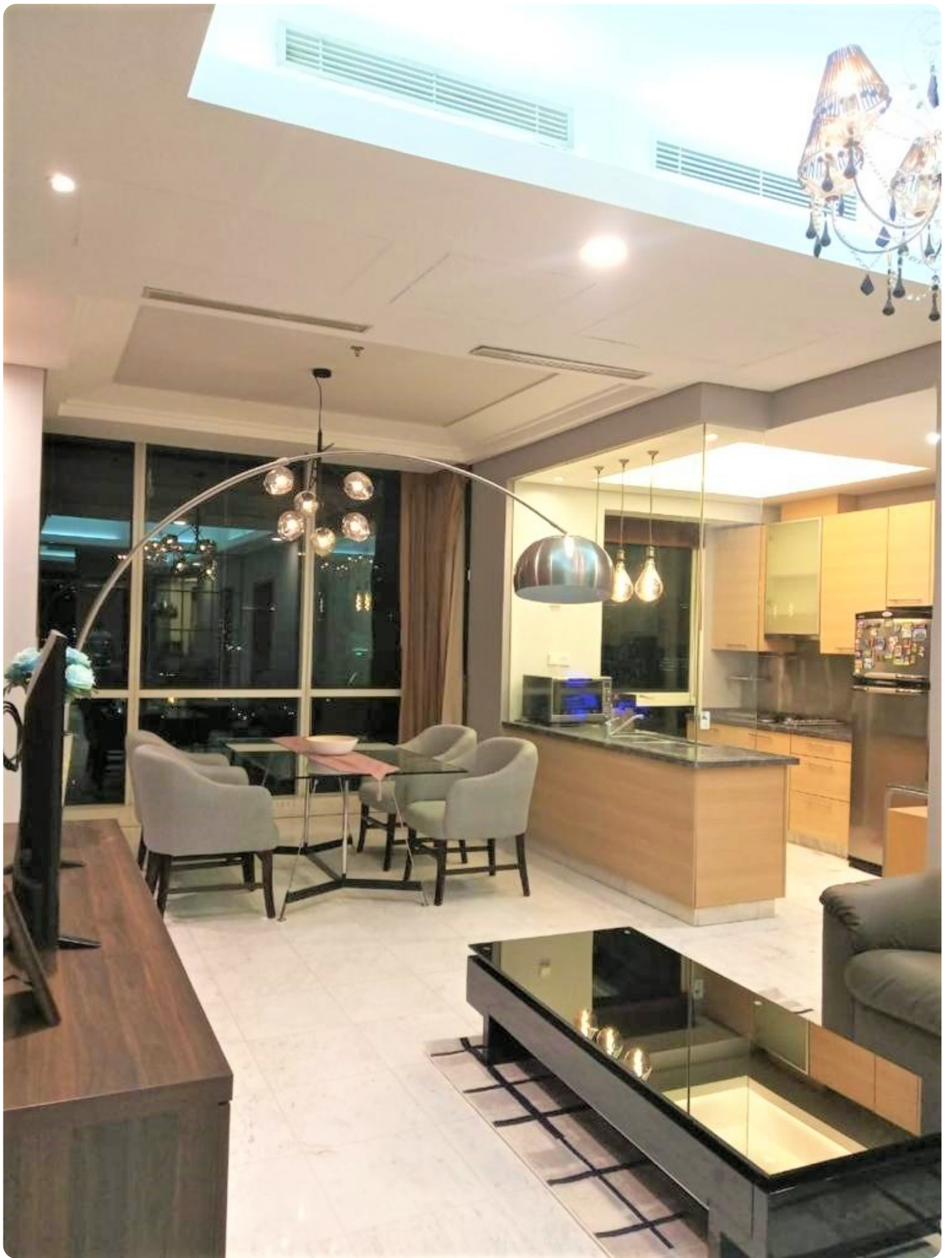
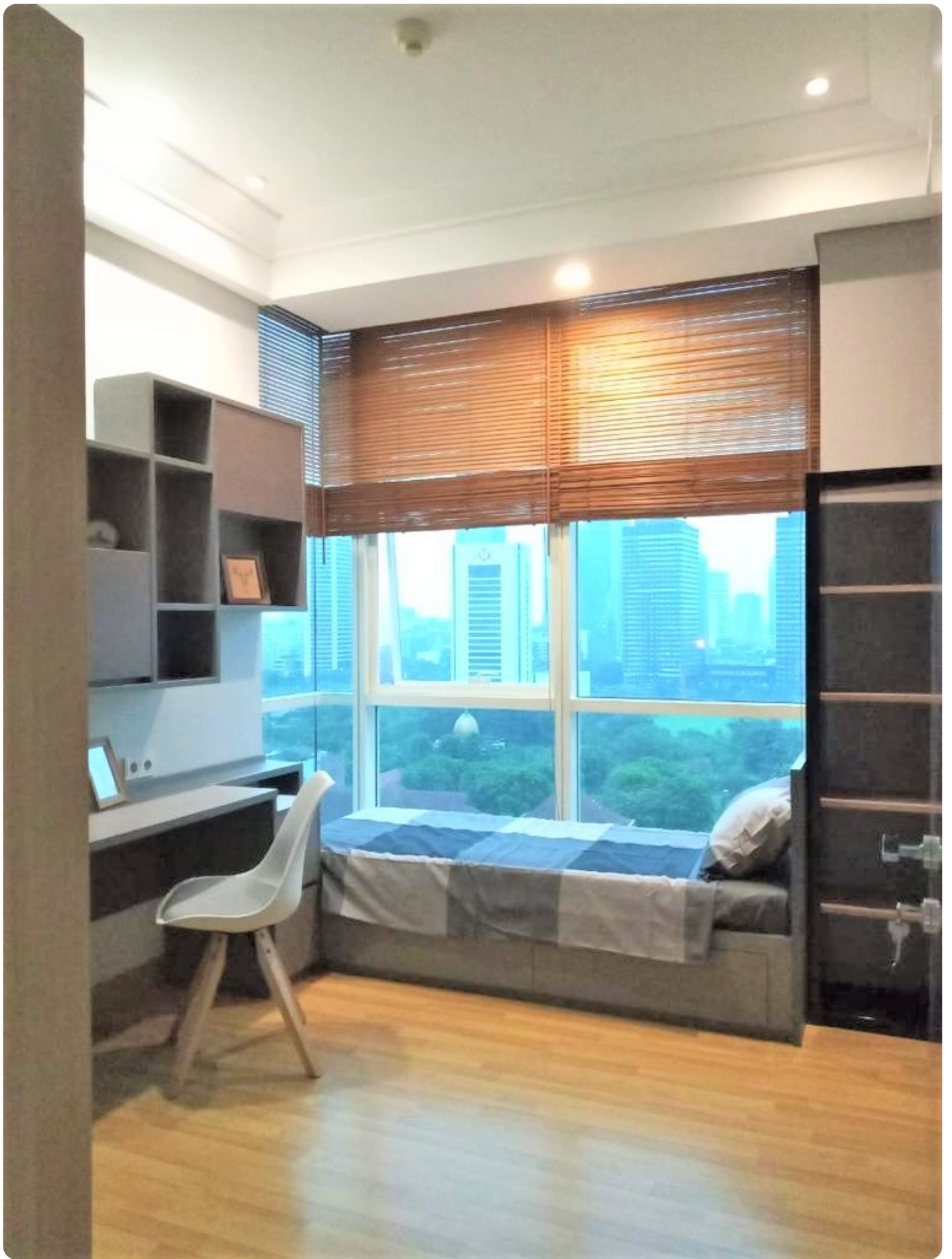


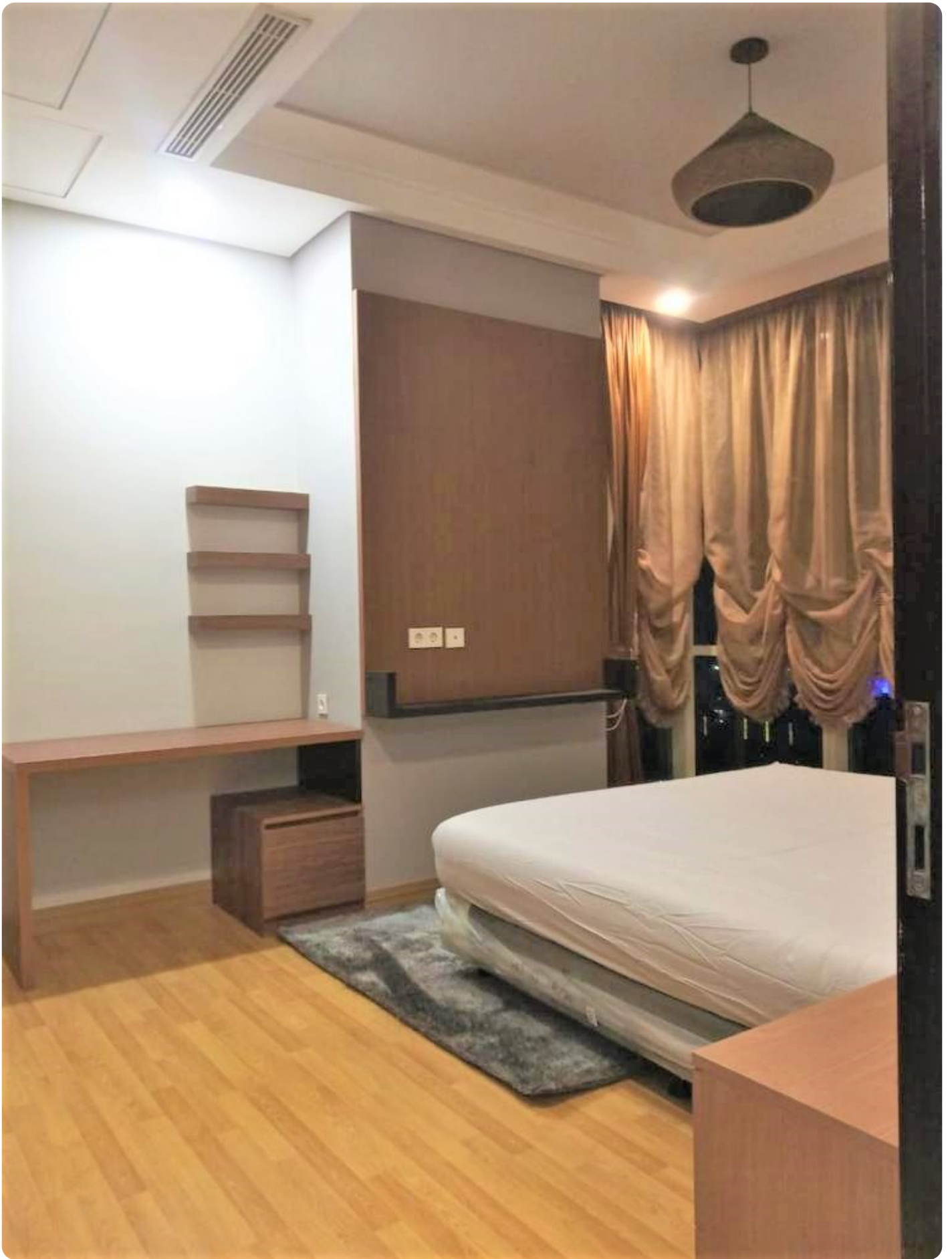
Disewakan Apartemen The Peak Sudirman Tipe 3 BR Fully Furnished

Jl. Setiabudi Raya No.9, RT.2/RW 2, Kuningan, Setia Budi, Kecamatan Setiabudi, Jakarta Selatan 12910









Rp. 24,000,000

Deskripsi

The Peak Sudirman is very strategic from any kinds of direction to every location in Jakarta; also near to several entertainment spots such as Grand Indonesia, Plaza Indonesia, near to Sudirman, Setiabudi, Rasuna Sai, Kuningan, and SCBD.

Selling Point :

- Ready to be occupied
- Walking distance to Bendungan Hilir MRT Station
- Walking distance to City Walk Sudirman
- 1 KM to MRCCC Siloam Hospital Semanggi
- 3 KM to Islamic International High School

For more information regards the unit, please contact : **ROSMAYA SAVA PROPERTI (+62 882-9545-3964)**

Detail Properti

Fitur	Keterangan
Tipe Bangunan	Apartemen
Luas Bangunan	159
Kamar Tidur	3
Kamar Mandi	2
Sertifikat	SHM
Fasilitas	Wifi,Air Conditioning,Balkon,Gimnastik,Lahan Parkir,Kolam Renang,Bar,TV,Dapur,CCTV,Musholla,Arena Bermain,Taman,Keamanan 24jam,Tempat Ibadah,Tempat Wisata,Klinik Kesehatan,Area Komersial,Sport Club,Play Ground,Trek Lari,Pusat Kebugaran,Taman Bermain Anak