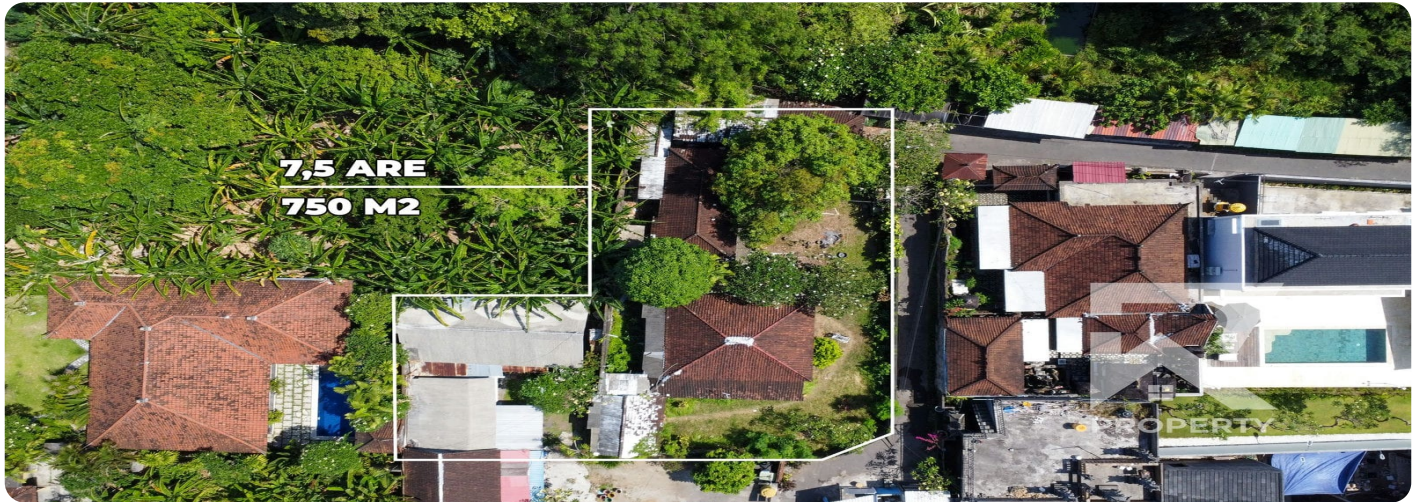


Prime Leasehold Land Plot with Building in Sanur Bali Available for Sale

Batur Sari, Sanur Kauh, Denpasar Selatan



Rp. 8,000,000

Deskripsi

Welcome to R Property, your trusted partner in real estate excellence. Today, we invite you to embark on an extraordinary journey to the captivating island of Bali. Situated in the prestigious Jalan Batur Sari, Sanur, Denpasar Selatan, Denpasar City, this exclusive leasehold land presents a golden opportunity for those seeking a slice of paradise in one of Bali's most coveted locations.

Spanning approximately 750 square meters, this exquisite plot of land offers limitless possibilities for creating your dream retreat. With an ITR (Advice Planning) designation of Yellow, you can rest assured that this property holds immense potential for your visionary plans.

Picture this: just a stone's throw away, the renowned Pitaloka Restaurant awaits, tantalizing your taste buds with its gastronomic delights. Imagine the convenience of having the Mutiara Medika Pharmacy Sanur, catering to your healthcare needs, only a three-minute drive away. And for those yearning for the sun-kissed shores, the pristine Sanur Beach is a mere five-minute journey from your future sanctuary. Let's not forget the Icon Bali Mall, a vibrant hub of entertainment and shopping, which can be reached in just five minutes. With BMC Sanur a mere six-minute drive away, you can rest assured that quality healthcare is always within easy reach. And when it's time to jet off to your next adventure, the international airport is a short 25-minute drive from this idyllic location.

Accessibility is key, and this extraordinary land parcel is easily reachable by car or motorcycle, ensuring effortless journeys to and from your haven. As you consider the possibilities, let your imagination run wild, for this location is surrounded by a multitude of exquisite villas, making it the perfect canvas for creating your own slice of paradise. Imagine owning a magnificent villa, tailor-made to host visitors from around the world, be it through traditional rentals or popular platforms

such as Airbnb.

Now, let's delve into the enticing pricing options. Secure this exclusive leasehold land for an incredible 8 million IDR per 100 m2 per 1 year, with a minimum lease period of 20 years. With such an attractive investment opportunity, the potential returns on your investment are boundless.

To ensure your utmost satisfaction, the land area will be re-measured, guaranteeing accuracy and transparency throughout the process.

Seize this unparalleled opportunity to become part of Bali's thriving real estate landscape. Reach out to us today at R Property, and our team of seasoned professionals will guide you through the process of acquiring this exceptional leasehold land. It's time to turn your dreams into reality and immerse yourself in the enchanting allure of Bali.

Details:

- Location in Jalan Batur Sari, Sanur, Denpasar Selatan, Denpasar City, Bali
- Land size ± 750 m2
- ITR (Advice Planning): Yellow
- Strategic location in Sanur, Bali. 2 minutes to Pitaloka Restaurant. 3 minutes to Mutiara Medika Pharmacy Sanur. 5 minutes to Sanur Beach. 5 minutes to Icon Bali Mall. 6 minutes to BMC Sanur. 25 minutes to Airport.
- Accessible by car or motorcycle.

Pricing:

8 million IDR / 100 m2 / 1 year
Minimum lease 20 years

Note:

The land area must be re-measured first.

Detail Properti

Fitur	Keterangan
Tipe Bangunan	Tanah
Luas Tanah	750
Sertifikat	Hak Sewa